



Dr. Carol A. Page

Dr. Page is the Director of the South Carolina Assistive Technology Program (SCATP) at the USC School of Medicine, Center for Disability Resources. SCATP is a federally-funded program concerned with getting technology into the hands of people with disabilities and age-related limitations so that they might live, work, learn, and be a more independent part of the community. Dr. Page received her PhD degree in speech-language pathology from the University of South Carolina and her assistive technology practitioner certificate from the Rehabilitation Engineering and Assistive Technology Society of North America. She has extensive experience in providing literacy and augmentative and alternative communication trainings, demonstrations, and consultations to children and adults with complex communication needs.

About the South Carolina State Library

The South Carolina State Library develops, supports, and sustains a thriving statewide community of learners committed to making South Carolina stronger. The Library serves the people of South Carolina by supporting state government and libraries to provide opportunities for learning in a changing environment. It is the primary administrator of federal and state support for the state's libraries. In 1969, as the result of action by the General Assembly, the State Library Board was redesignated as the South Carolina State Library and assumed responsibility for public library development, library service for state institutions, service for the blind and physically handicapped, and library service to state government agencies. Headquartered in Columbia, S.C., the Library is funded by the state of South Carolina, by the federal government through the Institute of Museum and Library Services, and other sources.

For more information, please visit www.statelibrary.sc.gov or call (803) 734-8666.

Follow the South Carolina State Library



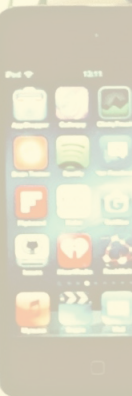
P&W^{ER}ING UP

INCLUSIVE LIBRARY SERVICES

Thursday, March 24, 2016

10 AM - 4 PM

South Carolina State Museum



SCHEDULE OF EVENTS

10:00 a.m. Welcome & Introductions

10:15 a.m. KEYNOTE

Jennifer Taggart, Asst. Dept. Head of Youth Services, Special Needs Collection Librarian, Speaker & Consultant, Bloomfield Township Public Library, Michigan: One Size Doesn't Fit All

Noon — 1:00 p.m. Working Lunch

Pick up lunch, and join a table of colleagues to discuss the topic of your choice: Programming for Children and Youth; Adult Programming; Community Partnerships; Promoting Services and Outreach; Assistive Devices for Library Users.

1:15 p.m. Exceptional Services for Patrons with Exceptionalities

Dr. Clayton Copeland, Instructor, USC-SLIS and Director of the SLIS Laboratory for Leadership in the Equity of Access and Diversity (LLEAD):

2:00 p.m. Assistive Technology Hands-On Learning

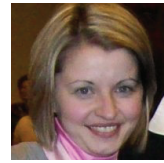
Kaitlyn Hodges, Reader Advisor for Talking Books Services, South Carolina State Library

2:45 p.m. Break/Networking

3:00 p.m. Adapted Literacy Activities and Make It & Take It Activity

Dr. Carol Page, Director, South Carolina Assistive Technology Program (SCATP) at the USC School of Medicine, Center for Disability Resources

4:00 p.m. Wrap-up, Q&A



Jennifer Taggart

Assistant Department Head, Youth Services & Special Needs Collection Librarian, Speaker & Consultant
Bloomfield Township Public Library, Michigan

Jennifer has enjoyed being a youth librarian for over 17 years. She collaborated with special education teachers and therapists to develop the Special Needs Collection at the Bloomfield Township Public Library (www.btpl.org/youth/special-needs/) and inclusive library programs. She has presented on the topic of special needs services and collection development at ALA and Michigan Library Association conferences in addition to developing the biennial Adaptive Umbrella Workshop (a day-long workshop for librarians, teachers, and parents working with special needs youth). She co-developed the Special Needs Services Roundtable (SNSR) of Michigan librarians providing services for patrons of all ages with special needs. In 2009, Jennifer received the Michigan Library Association Children's Services Division Award of Merit for her development of the special needs collection and innovative youth programs.



Dr. Clayton A. Copeland

Dr. Copeland is Director of the SLIS Laboratory for Leadership in the Equity of Access and Diversity (LLEAD) and helps manage the Linda Lucas Walling Collection for Universal Access, which is located in the SC Children's Center for Books

and Literacy at 1530 Senate Street in Columbia. Her research focuses upon equity of access to information for underserved populations and literacy. She also pursues research interests in technology, Universal Design, facilities planning, materials and programming for children and young adults, and information behavior. Dr. Copeland teaches courses in Foundations of Library and Information Science, Technology, Information Literacy, Information Resources, Planning Library and Information Facilities, and Materials and Programming.